

Identifying water mass depletion in Northern Iraq observed by GRACE

G. Mulder¹, T.N. Olsthoorn¹, D.A.M.A. Al-Manmi², E.J.O. Schrama¹, and E.H. Smidt¹

¹Delft University of Technology, Delft, The Netherlands

²University of Sulaimani, Department of Geology, Sulaymaniyah, Iraq

Correspondence to: Gert Mulder (gert.mulder@gmail.com)

Abstract. Observations acquired by Gravity Recovery And Climate Experiment (GRACE) mission indicate a mass loss 146 ± 6 mm equivalent water height (EWH) in Northern Iraq between 2007 and 2009. This data is used as an independent validation of a hydrologic model of the region including lake mass variations. We developed a rainfall-runoff model for five tributaries of the Tigris River, based on local geology and climate conditions. Model inputs are precipitation from Tropical Rainfall Measurement Mission (TRMM) observations, and climatic parameters from Global Land Data Assimilation Systems (GLDAS) model parameters. Our model includes a representation of the karstified aquifers and is calibrated with observed river discharge. Lake mass variations were derived from Moderate Resolution Imaging Spectroradiometer (MODIS) in combination with satellite altimetry and some in-situ data. Our rainfall-runoff model confirms that Northern Iraq suffered a drought between 2007 and 2009 and shows the same patterns as the observed GRACE data. Also, GRACE observed the annual cycle predicted by the rainfall-runoff model. The total mass depletion seen by GRACE between 2007 and 2009 is mainly explained by a lake mass depletion of 75 ± 3 mm EWH and a natural groundwater depletion of 39 ± 8 mm EWH. Our findings indicate that anthropogenic groundwater extraction has a minor influence in this region, while a decline in lake mass and natural depletion of groundwater play a key role.

of water mass in the region (UN-ESCWA and BGR, 2013; Voss et al., 2013). Decrease in rainfall and water availability directly affected the water supply of towns and villages (Michel et al., 2012) and caused a strong decline in crop yields in Northern Iraq (Trigo et al., 2010). About 100,000 people have left their homes in Northern Iraq as a consequence of depleted water sources (McLeman, 2011). From 2009 onwards, rainfall rates have been rising, but are still lower than before the drought period. Moreover, a permanent decrease of rainfall rates in the region is predicted, based on climate models (Gibelin and Déqué, 2003; Giorgi and Lionello, 2008; Mariotti et al., 2008).

Concurrent with decreasing water availability in the region, water demands are fast increasing due to population growth and increase of irrigated agriculture (Altinbilek, 2004; Beaumont, 1998). Especially in Turkey, water demands increase rapidly due to the Southeastern Anatolia Project (GAP), which includes the construction of dams and irrigation schemes in the upstream Tigris catchment. At this moment, about 42,000 ha of this irrigation scheme is operational, with 53,400 ha under development and another 500,000 ha planned in future years (Altinbilek, 1997). Additionally, several dams and irrigations projects are under construction in the Iranian headwaters of the Tigris, which will reduce river flows in Northern Iraq permanently (Ali, 2007).

This means that especially Northern Iraq has to cope with a permanent decrease of its water resources due to lower rainfall and lower river flows from upstream countries. Because agreements on water between riparian countries are either hardly effective or non-existent, there are no guarantees that Iraq will ever receive as much water as before (UN-ESCWA and BGR, 2013; Al-Manmi, 2009).

Several hydrologic studies of the region exist (Chenoweth et al., 2011; Kavvas et al., 2011), but they are generally coarse due to the lack of ground truth and do not yield spe-

1 Introduction

During 2007 till 2009, Northern Iraq suffered a severe drought, with rainfall rates 40% below normal levels (Trigo et al., 2010; Fadhil, 2011). In the same period, discharge of large springs and rivers decreased substantially and data from the GRACE satellite mission indicated a permanent loss

cific information on hydrology and groundwater storages. 120
 Mass observations from GRACE provide a valuable tool to
 give more insight in the terrestrial water storages and are
 widely used as a validation of global hydrologic models like
 GLDAS, WaterGAP Global Hydrology Model (WGHM) and
 Global Geodynamics Project (GGP) (Voss et al., 2013; Werth
 et al., 2009; Awange et al., 2011; Hinderer et al., 2006; 125
 Schmidt et al., 2008; Ngo-Duc et al., 2007; Llubes et al.,
 2004). For the Euphrates and Tigris region, a comparison be-
 tween GRACE and the GLDAS model was made by Voss
 et al. (2013), which showed a large difference in both yearly
 and long-term mass variations. This could indicate that an- 130
 thropogenic groundwater extraction is a main cause of water
 depletion in the region, but the inability of the GLDAS model
 to capture yearly water mass variations makes the outcomes
 doubtful. Moreover, the GLDAS model does not contain a
 groundwater reservoir, which is important to track natural 135
 groundwater variations.

In this study, independent mass variations obtained from
 GRACE data are compared with water mass variation
 from lakes/reservoirs and a newly developed rainfall-runoff
 model, to show that these are likely the main causes of water 140
 mass depletion in the region. GRACE mass variation is de-
 rived using a mascon approach from Schrama et al. (2014)
 and the rainfall-runoff model is based on the general hydro-
 logic and geology of the region using the topo flex approach
 from Savenije (2010); Fenicia et al. (2011). Forcing data for 145
 this model is based on climatic parameters from the GLDAS
 model, daily rainfall from TRMM and local rainfall stations.
 Calibration of the model is done using local discharge mea-
 surements. MODIS surface reflectance data was used in com-
 bination with altimetry data from the Environmental Satellite 150
 (Envisat), Jason 1&2 and GEOSAT Follow-On (GFO) satel-
 lite missions (Crétaux et al., 2011) to find lake mass vari-
 ations. Local hydrologic and geologic data were obtained dur-
 ing fieldwork in cooperation with local water experts. In-situ
 data includes discharge data of one of the Tigris River tribu-
 taries (Directorate Dokan Dam, unpublished data) and rain-
 fall data from four stations in the region (Meteorological de-
 partment Kurdistan, unpublished data). 155

The following modelling steps will be used to com-
 pare GRACE data with water mass variations from
 lakes/reservoirs and the rainfall-runoff model: Firstly, the to-
 tal mass variation from an extended study area is derived
 from GRACE using a mascon approach. Secondly, the sur-
 face water mass is calculated for the same area and extracted 160
 from GRACE data, to obtain an approximate soil moisture
 and groundwater mass variation. Thirdly, the study area is
 reduced to Northern Iraq only, using soil moisture data from
 GLDAS. Finally, the natural variation in soil moisture and
 groundwater mass for Northern Iraq is calculated using a 165
 newly developed rainfall-runoff model.

2 Study Area

Most of Northern Iraq is part of the upstream catchment of
 the Tigris River, which originates in Turkey and flows south-
 wards to the Persian gulf. The total yearly flow of the Tigris
 at Baghdad is about $50 \text{ km}^3 \text{ yr}^{-1}$, of which half originates
 from upstream catchments in Turkey and half from tribu-
 taries in Northern Iraq (Brooks, 1997; Altinbilek, 2004). Fig-
 ure 1 gives an elevation map of the total study area, which in-
 cludes five main tributaries of the Tigris River, of which four
 have headwaters in Turkey or Iran. Figure 1 also presents a
 map of the mean yearly rainfall rates between 2002 and 2012,
 based on TRMM 3B42 (V7) data (Huffman et al., 2007).
 This map illustrates the large climatic variations in this area.
 While the south-western part of the catchment has a desert
 climate with rainfall rates of about 200 mm yr^{-1} , the north-
 eastern part consists of a mountain range with a considerably
 colder climate with rainfall rates up to 1000 mm yr^{-1} . The
 mountainous region in the north and northeast of the catch-
 ment is the main source of water of the Tigris River, while
 the arid areas in the southwest are totally dependent on up-
 stream river water (Beaumont, 1998; Brooks, 1997). Beside
 spatial differences in climates, there are also large seasonal
 and yearly variations in rainfall and temperatures. Almost all
 rain falls during the winter period, between November and
 March, and mean rainfall rates can drop by fifty percent in
 dry years.

To ensure water supply in the region during dry periods,
 many reservoirs exist and several are currently under con-
 struction. Northern Iraq includes the lakes of Mosul, Dukan,
 Derbendikhan, Adhaim and Hamrin, which all show a water
 mass decline during the 2007-2009 drought. But also water
 mass decline from lakes close to our study area, like Lake
 Tharthar, Habbaniyah, Qadisiyah, Razzazah, Urmia and Raz-
 zazah, are considered in this research (fig. 2).

3 Methods

3.1 GRACE mass variation calculations

During the last years, several methods have been developed
 to calculate mass change based on GRACE data like Swen-
 son and Wahr (2006); Schrama and Wouters (2011). Most
 methods comprise different processing steps, mainly to re-
 duce noise, apply geophysical corrections, add consistency
 and improve the ability of GRACE to see spatial details. This
 study uses a mascon approach, based on circular mascons
 with a radius of approximately one degree, which are evenly
 distributed over the Earth's surface (Schrama et al., 2014).
 This method is based of GRACE level-2 data from the Cen-
 ter of Space Research (CSR) and includes modifications for
 the gravitational flattening term C20 from satellite laser rang-
 ing. Furthermore the method also considers degree 1 terms
 associated with geo-center motions as a result of geophys-

ical loading phenomena. The used GRACE method is not a spatial averaging kernel method, instead to obtain equivalent water levels over a region one has to add up the signal from the individual mascons. The signal at these mascons is obtained via a global inversion method. The advantage of this approach is that resulting EWH values are part of a standard GRACE product and will be consistent with other regional solution worldwide. The disadvantage is that we have to adapt our study area to the given mascons. We are thus not able to use approaches like Krogh et al. (2010), which adapt the mascons to the geometry of the studied basin. However, a simple test where adjacent mascons were added to our study area, showed that small changes in study area do not have significant effects on the resulting GRACE values. Also, comparison between our method and other common methods by Shepherd et al. (2012) showed that differences are generally small.

To calculate water mass decline from GRACE data, an extended study area is used. Figure 2 shows the used area and mascon coverage for the GRACE mass calculations. This area is about $260 \cdot 10^3 \text{ km}^2$ and includes a large part of the catchment of Lake Urmia ($\pm 45 \cdot 10^3 \text{ km}^2$) and a part of the desert to the south-west of North Iraq ($\pm 95 \cdot 10^3 \text{ km}^2$). The desert area was added because we want to make sure that the mass decline from Lake Tharthar (fig. 2) is fully captured by our GRACE mass calculation and can be corrected for later on. This lake showed a decline in water mass of about 48 mm EWH for the extended study area during the 2007-2009 drought, which is more than 50 % of the total lake mass decline. Other lakes like Lake Razazzah and Lake Urmia are still close to the border, but these lakes have shown much less water mass depletion between 2007-2009 (tab. 1). This induces mass leakage of these lakes outside our study area (Longuevergne et al., 2013), which is corrected as explained in section 3.2.

To compare the total water mass variation of the rainfall-runoff of Northern Iraq with GRACE, the derived GRACE mass was corrected for soil moisture and groundwater mass variation of the extended area to the southwestern desert. Groundwater pumping in these areas is generally small due to high salt content or deep groundwater tables (Krásný et al., 2006) and is estimated around $30\text{-}35 \cdot 10^{-3} \text{ km}^3 \text{ yr}^{-1}$ (UN-ESCWA and BGR, 2013) Because recharge and discharge rates of the aquifers are also very low in this area, we do not expect significant groundwater variations in this region. Therefore, we assumed that the soil moisture profile from GLDAS Rodell et al. (2004) can be used as a measure for the total water mass variation in the area. The new GRACE values for Northern Iraq then becomes:

$$H = \frac{H_t A_t - G_d A_d}{A_t - A_d} \quad (1)$$

Where H is the equivalent water height, A is the total area and G is the soil moisture variation in water depth from the

GLDAS model. Subscripts t and d indicate total and desert areas.

This correction assumes a pristine area, which is not true for the irrigated areas around Baghdad in Central Iraq. This likely causes an underestimation of the yearly water mass variation due to the growing season of the crops in this region. However, water mass decline due to anthropogenic groundwater extraction is small because of the high salt content of groundwater in this region Krásný et al. (2006).

Because the influence of groundwater variation is large in the catchment of Lake Urmia (fig. 2), the correction used for the Desert area cannot be applied here Tourian et al. (2015). Instead, the hydrology of the region is comparable with Northern Iraq. Therefore, the water mass variation in mm EWH from the catchment of Lake Urmia are neglected and assumed to be the same as in Northern Iraq. This introduces an error in the model on a small time scale due to local rainfall events, but on a longer timescale these errors will be minor due the similarities between the regions.

3.2 Derivation of lake mass

The total lake mass variations play an important role in the water balance of the Tigris region (Voss et al., 2013; Longuevergne et al., 2013). Figure 2 gives an oversight of the important lakes in the region. To obtain total lake mass contributions in our study area, time series of both lake level and lake area were calculated. The lake levels are derived from satellite altimetry by Crétaux et al. (2011) and USDA/FAS (2013), which includes data from the Envisat, Jason 1&2 and GFO satellite missions. Area calculations were based on MODIS satellite data to detect water areas, combined with digital elevation maps (DEM) from the Shuttle Radar Topography Mission (SRTM) to distinguish different water bodies. The actual method uses a $250 \times 250 \text{ m}$ grid and comprises of three steps: First, the possible extend of the lake was calculated from the DEM using a minimum and maximum elevation. Secondly, the larger lake areas were selected using MODIS reflectance band 5 (1240 nm, 500 m resolution). Finally, the exact lake borders were defined using MODIS reflectance band 2 (858 nm, 250 m resolution).

From the lake level and lake-area time series stage-area curves were created using linear or cubic regression. In fig. 3, a comparison is given of the derived stage-area curve from our model and a survey of Lake Mosul using sonar by Issa et al. (2013). To decide whether a cubic regression gives a significant improvement, the F-test was used for a 95 % interval. Total volume change over time was then derived from the stage-volume curve, which is the integrated stage-area curve. Table 1 gives the derived water mass decline between 2007 and 2009 of the main lakes in the region. This water mass decline is derived by subtracting the average water mass in 2009 from the average water mass in 2006.

Uncertainties in water mass calculations from lakes are derived from estimated errors in water level measurements

given by Crétau et al. (2011) and USDA/FAS (2013). The total error is given by:

$$\sigma^t = \sqrt{\frac{\sum_{i=1}^n (\sigma_i^t A_i^t)^2}{n}} \quad (2)$$

Where σ_i^t is the estimated standard deviation of the lake water level from lake i at time t , n is the number of lakes and A_i^t is the lake area at the same moment.

Another source of uncertainty are the errors in lake area calculations, but these are generally small and are difficult to quantify. For example, the difference in lake size from lake Mosul and the derived values from Issa et al. (2013) (fig. 3) are about 10 km² but it only causes significant differences in the stage-volume curve for high water levels. Additionally, the relative error for larger lakes is much smaller because the ratio between lake shore length and lake area becomes smaller with increasing lake size.

To give an approximation of mass leakage from lakes in our study area results from Longuevergne et al. (2013) are used. This led to a correction for Lake Razzazah of 0.65 and a correction for Lake Urmia of 0.6, because these lakes are located close to the border and far from the centre of the study area. Corrections for other lakes were not significant and were therefore omitted.

3.3 Rainfall-Runoff model

In this study, a rainfall-runoff model was used based on the topo flex approach as proposed by Savenije (2010); Fenicia et al. (2011) and a simplified snow routine based on Lindström et al. (1997). This resulted in a semi-distributed model structure based on the geology and topography of the five main tributaries of the Tigris River in Northern Iraq (fig. 5). Forcing parameters of the rainfall-runoff model are calibrated daily precipitation data from TRMM (Huffman et al., 2007), daily temperature values from GLDAS and daily reference evaporation derived from GLDAS climatic parameters (Rodell et al., 2004; Allen et al., 1998). TRMM data was bias-corrected by linear regression with monthly precipitation from four gauging stations in Sulaymaniyah, Dokan, Derbendikhan and Penjwen (Meteorological department Kurdistan, unpublished data).

The rainfall-runoff model is identical for all five tributaries, and is based on three geologic zones in accordance with geologic maps of Stevanovic and Iurkiewicz (2008). The three zones are:

1. Infiltrative or karstified zone: About one third of the surface area of the mountainous zone consists of karstified limestone and is, therefore, highly infiltrative. These limestones have infiltration rates of more than 50 percent and transmissivities ranging from 9 to 8000 m²/day (Krásný et al., 2006).
2. Non-infiltrative zone: This zone consists of the other mountainous areas, which are characterised by fast

runoff due to shallow soil layers, steep slopes and impermeable underlying formations.

3. Alluvial zone: Most of the soils in the dry south western part consist of clay and silt sediments. In this region flash floods are common during the scarce rainfall events.

For all five tributaries of the Tigris River in Northern Iraq and the remaining area close to the Tigris River the same model setup is used, with the total areas of the three geologic zones as the only difference. For example the flow regime of the Adhaim River is governed by the alluvial part of the model, while the Greater Zab is mainly fed by water from the infiltrative and non-infiltrative zones.

Figure 4 gives a detailed oversight of the model reservoirs and parameters. The snow routine and unsaturated reservoirs are modelled in a distributed way, using the 0.25 degree grid from TRMM as a basis. When grid cells are part of two or more different basins or geologic zones the cell is split up in different parts, which contribute to their respective zones or catchments. Parameter values of different grid cells were kept the same within the geologic zones, while input precipitation from TRMM and climatic values from GLDAS were separately assigned to each cell. From the unsaturated zone, water is either routed via the fast runoff or groundwater reservoir to the river. A lag function was added to the model to simulate the routing of water through streams and rivers to the catchment outflow. The fast runoff and deep groundwater reservoirs of the infiltrative and non-infiltrative zones were combined, because the topography and top soils are comparable and share the same underlying aquifers (Krásný et al., 2006). A total number of eighteen parameters was used in the model, which were restricted to minimum and maximum bounds during calibration to prevent equifinality and ensure realism of the model. Especially the parameters for the karstified/infiltrative groundwater reservoir have a strong influence on the modelled water mass variations. The parameter value for this reservoir is based on the recession curves of spring discharges, which emerge from the karstified aquifer in Northern Iraq. Generally, the discharge from the karstic aquifers in Northern Iraq can be split up in two components (Stevanovic and Iurkiewicz, 2008; Ali and Stevanovic, 2010). The first component is a rapid discharge within a month after major rain events, which is related to channels and large fractures in the limestone aquifer. The second component is a much slower discharge with a stable recession coefficient during the whole dry season. This coefficient is about 0.004 per day on average, based on discharge time series of several large springs in the region (Ali and Stevanovic, 2010; Ali et al., 2009b, a). The first component is covered by the fast reservoir in our hydrologic model, while the second component is modelled as a slow groundwater reservoir. The bounds of the storage and infiltration rates in the unsaturated reservoirs were based on fieldwork and personal communication with local hydrologists.

3.4 Model Calibration

In literature generally two methods are used to integrate GRACE mass into the calibration and validation process. Either GRACE information is used to inform the model as a calibration parameter like in Werth et al. (2009), or to validate of the model like in Syed et al. (2008). In our case it would be best to use the GRACE data to inform the model, because we want to show that a hydrologic model is able to mimic the mass depletion observed by GRACE. However, during the lifespan of the GRACE satellite only one drought like in 2007-2009 did occur in our region, which makes it impossible to use a separate calibration and validation period. Therefore, we have chosen to use the GRACE data only as a validation of the model, but include also the results for the case that GRACE was used to inform the model. This approach shows that the resulting water depletion will increase due to the inclusion of GRACE data, although it does only have relatively small impacts on model behaviour.

The primary source for model calibration is river discharge of the Lesser Zab (Directorate Dukan Dam, unpublished data) at the inflow of Lake Dukan (see fig. 5). The most convenient data to calibrate the model on would be the discharge from the total study area at Baghdad, but this data was not available for us. Additionally, the discharge at those points is not suitable for rainfall-runoff modelling, because it is strongly influenced by the operation of upstream dams and reservoirs. Therefore, the performance of the model was first evaluated for the upstream area of Lake Dukan and expanded to the whole of Northern Iraq, to allow comparison with GRACE. This expansion is possible due to the geologic similarities in the region, which are explained in section 3.3.

Model calibration was done using a Monte Carlo simulation with randomly chosen parameter values for every model run, within given parameter bounds. Total discharge for the Dukan area was evaluated by the Nash-Sutcliffe efficiency (NS) for medium and high flows and by the log Nash-Sutcliffe efficiency (logNS) for low flows:

$$NS_Q = 1 - \frac{\sum_{t=1}^T (Q_o^t - Q_m^t)^2}{\sum_{t=1}^T (Q_o^t - \overline{Q_o})^2} \quad (3)$$

$$\log NS_Q = 1 - \frac{\sum_{t=1}^T (\log(Q_o^t) - \log(Q_m^t))^2}{\sum_{t=1}^T (\log(Q_o^t) - \log(\overline{Q_o}))^2} \quad (4)$$

Where Q_o represents the observed daily discharges, $\overline{Q_o}$ is the average observed daily discharge and Q_m the modelled daily discharge. In the case that GRACE mass was also used as a calibration parameter, model mass performance

was evaluated using the Nash Sutcliffe efficiency for water mass variation:

$$NS_M = 1 - \frac{\sum_{t=1}^T (M_o^t - M_m^t)^2}{\sum_{t=1}^T (M_o^t - \overline{M_o})^2} \quad (5)$$

Where M_o represents the observed mass variations from GRACE, $\overline{M_o}$ is the average observed GRACE mass and M_m the modelled mass variation from lakes and the rainfall-runoff model. Figure 9 gives the pareto front for the average NS_Q and $\log NS_Q$ of the river discharge. In the same figure the NS_Q and $\log NS_Q$ values are given of the additional models from the pareto front if NS_M would be added as a third objective parameter. The presented optimal solution was chosen based on the following condition:

$$\max(NS_Q + \log NS_Q) \quad (6)$$

In the result and discussion section, the model ensemble of the models from the pareto front are given as an uncertainty band, beside the optimal solution.

4 Results and discussion

4.1 GRACE

Figure 6 shows the resulting GRACE values in terms of equivalent water height, with an estimated 95 % confidence band of 20 mm (Schrama et al., 2007). Water mass depletion between 2007 and 2009 is 146 ± 6 mm EWH. These values are based on average GRACE values before and after the drought, which show more or less constant values. Yearly variation is 286 ± 24 mm based on the yearly minimum and maximum values between 2003 and 2011. In the lower graph of fig. 6, the average monthly rainfall is given for the same period to show the relation between GRACE values and rainfall. The periods with more than average rainfall generally coincide with increasing GRACE values, due to of accumulation of rainwater in the catchment areas. The drought period between 2007 and 2009 coincides with an overall decrease in water mass, while the water mass is more or less stable during the periods before and after the drought. The magnitude of the yearly variations in water mass follows the yearly rainfall trend and is therefore largest before 2007 and smallest during 2007-2009. The GRACE data after 2009 is more or less stable, with almost no difference in average water mass. This could indicate that a new equilibrium state is reached after the drought, where the outflow of the system is in balance with lower precipitation values.

The given GRACE values could also be influenced by leakage of mass over the borders of our study area, due to

large soil water or groundwater mass variation just inside or outside our study area. But because the GRACE signal for a larger region, as given by Voss et al. (2013) are comparable to the signal we found, the effect of this mass leakage will be limited.

4.2 Lakes and Reservoirs

To compare the total lake mass change with GRACE, all lake mass variations were added up and divided by the total area of the region. Figure 7 shows the surface water mass variation in terms of EWH, with a 95 % confidence interval. The total lake mass accounts for 75 ± 3 mm of the water mass depletion between 2007 and 2009 and 55 ± 6 mm of the yearly water mass variation during 2003–2011. This means that more than 50 % of the total water mass depletion is caused by a decline of surface water mass. Such declines in surface water mass were already claimed for the whole Euphrates and Tigris basin by Longuevergne et al. (2013), but their values are higher than those given by Voss et al. (2013). Different results between our and other researches are likely caused by differences in the size of the studied basins, but exclusion of mostly smaller lakes can also play an important role. For example, lakes Hamrin, Adhaim, Dukan, Habbaniyah and Mosul, had a total volume decline of about 13 mm EWH during the study period, but are not considered by Longuevergne et al. (2013) and Voss et al. (2013). Beside exclusion of several lakes, also mass leakage from lakes in the study area can lead to different results.

Figure 7 also shows that large lake mass variations are not uncommon in this region, which is due to large differences in rainfall from year to year and recurring droughts Trigo et al. (2010). However, increasing water use in upstream countries like Turkey and Iran will hinder replenishment of lakes and reservoirs in Northern Iraq Ali (2007); Beaumont (1998).

4.3 Modelled discharge Dukan catchment

Figure 8 shows the modelled and measured discharge at the inflow of Lake Dukan from 2005 till 2007. Generally, the low flows are captured quite well with discharge values within the given bands, while the modelled high flows deviate much more from the measured ones. This is likely related with fast and slow runoff mechanisms in the model, represented by the fast runoff and groundwater reservoirs respectively. The fast runoff reservoir is mainly fed by heavy or local rain events on short time scales, which are not well represented by the TRMM data. The slow runoff or groundwater reservoir has a much longer timescale and relies more on seasonal rainfall, which is captured much better by TRMM Almazroui (2011).

The modelled results are given as a pareto ensemble based on the pareto optimal solution for the NS and logNS performance indicators (fig. 9). This ensemble is mainly a measure for the uncertainty of the model due to the model parameters. Uncertainty of the model due to forcings like rainfall or po-

tential evaporation were not evaluated. Further, we assume a pristine catchment, but in reality the flows will be somewhat higher because of water use upstream. This mainly affects the baseflow and will result in higher groundwater variations. It is therefore more likely that we underestimate the water mass variation in the Dukan catchment.

4.4 Natural groundwater variations

The natural groundwater mass variations derived from the rainfall-runoff model is given in fig. 10. This figure shows the optimal solution based on formula 6 together with the pareto ensemble for the NS_Q and $\log NS_Q$ performances and the pareto ensemble based on the NS_Q , $\log NS_Q$ and NS_M performances. Note that the pareto ensemble where GRACE mass is included also covers the other pareto ensemble and includes both the red and the blue bands. Modelled groundwater variations from the NS_Q and $\log NS_Q$ ensemble contribute 42 ± 5 mm EWH to the yearly water mass variations and 26 ± 8 mm EWH to the water mass depletion between 2007 and 2009. Modelled groundwater variations from the NS_Q , $\log NS_Q$ and NS_M ensemble contribute 49 ± 7 mm EWH to the yearly water mass variations and 34 ± 14 mm EWH to the water mass depletion between 2007 and 2009. This shows that modelled water mass depletion does increase when GRACE data is used as a calibration parameter, but model results are consistent. The contribution of the natural groundwater mass explains why those values where not reproduced by the GLDAS model, which does not include groundwater storage. The time series for the groundwater reservoir as given in fig. 10 comprises a period with slowly decreasing groundwater levels till 2007, followed by a period with a strong groundwater depletion from 2007 till 2009, and a period with slowly increasing groundwater levels from 2010 till 2012. Groundwater from the karstified aquifers plays an important role in the groundwater depletion between 2007 and 2009, because of its high recharge during wet periods and fast discharge through springs during dry periods. While the aquifers still discharge water through springs during dry years, there is much less replenishment of the groundwater and groundwater levels will drop. In the governorates of Sulaymaniyah and Duhok alone, about $1.5 \text{ km}^3/\text{year}$ water emerges every year from springs (Stevanovic and Markovic, 2004; UN-ESCWA and BGR, 2013). After 2009, modelled groundwater levels remained almost stable because rainfall rates were still below average, but a sequence of years with higher rainfall will result in a rise of groundwater levels and a revival of spring discharge.

To convert the groundwater mass variation from the Dukan area only to the whole of Northern Iraq, the model was extended using the similarities between geological regions. These assumption is based on the identical geological background of these regions Stevanovic et al. (2009). We do not know exactly whether the related aquifers developed in the same way, but because of the occurrence of springs in the

region with similar characteristics we think this assumption
can be made.

4.5 Mass variations model reservoirs

Beside the groundwater reservoir the model consist of three additional reservoirs to model the snow layer, unsaturated zone and fast runoff (fig. 11). These reservoirs mainly contribute to the yearly mass variation of 122 ± 7 mm EWH and have only a small contribution to the water mass decline with 10 ± 1 mm EWH. The unsaturated reservoirs show a recurring pattern every year where the soil layers get saturated during the wet season and dry out during the dry periods. The yearly variation of these reservoirs is 65 ± 8 mm EWH. The fast runoff reservoir, which represents overland flow and interflow in the basin, shows peaks up to about 60 mm EWH during and shortly after intense rainfall events. The average yearly variation of the fast reservoir is 38 ± 7 mm EWH and the decline after the drought is negligible. The snow reservoirs show the largest differences between dry and wet years, because it accumulates precipitation for a whole rainy season. Still, almost all snow melts away during summer due to the strong temperature differences between seasons. The average yearly variation of the snow mass is 25 ± 4 mm EWH and the average decline 6 ± 1 mm EWH.

4.6 GRACE and modelled values

Figure 12 compares the total water mass variation from GRACE and the lakes plus the rainfall-runoff model. GRACE values indicate a mass depletion 146 ± 6 mm EWH between 2007 and 2009 and a yearly mass variation of 286 ± 24 mm EWH. The combined water mass variation of lakes and the rainfall-runoff model result in a water mass decline of 114 ± 9 mm EWH and an average yearly variation of 225 ± 9 mm EWH. The two graphs differ mainly in the winter and summer peaks, but also a part of the water mass decline remains unexplained.

Possible causes for the differences in yearly water mass variations are an underestimation of accumulated snow water or random errors in rainfall rates from TRMM data, which are 23 % on average. Also the impact of anthropogenic activities can cause higher peaks. This can be due to surface water irrigation and groundwater use, which is replenished during the wet season. Other possible causes are additional water storage in depressions or water mass variability of smaller lakes. In theory, we could have changed the maximum storage of the unsaturated zone to fit the given curves better, but this would create a large difference between the modelled and the literature values.

Possible causes for the differences in mass decline are anthropogenic groundwater extraction or lakes, which were not included in the model. But also model uncertainties for due to mass leakage or the groundwater reservoirs can be a main cause.

5 Conclusions

5.1 Water masses in Northern Iraq

The presented approach offers the possibility to quantify different hydrologic processes in the region as well as the shares of surface water, soil moisture and groundwater in the total water mass variation. More importantly, the overall model shows that natural variation of groundwater, snow depth and soil moisture have a share of about 25 % of the total water mass decline. With a depletion of 39 ± 8 mm EWH it also explains more than half of the remaining mass decline if lake masses are extracted from GRACE results. This shows that natural groundwater variation has to be taken into account when GRACE mass values are used to determine overdraft of aquifers.

Especially, in the limestone aquifers of Northern Iraq, strong groundwater variations are common due to extensive karst networks with high transmissivities and infiltration rates, feeding numerous springs in the region. Therefore, overpumping of these aquifers is unlikely, as the groundwater table can vary strongly and the regional water supply is mainly supported by surface water. Additionally, almost all irrigation schemes in those areas are directly linked to large reservoirs.

The dependency of this region on surface water is also reflected by the large water mass variations of the surface water, which contributed about 75 mm out of 146 mm EWH observed by GRACE. With decreasing water availability and increasing water demands from riparian countries in the Tigris River catchment, the need for reliable water management tools is growing, including transboundary models. The developed model helps to give insights in the available water resources and water flows between concerned countries and can be used as a base for water allocation and water agreements. Contrary to other studies like (Chenoweth et al., 2011; Kavvas et al., 2011; Voss et al., 2013), main aquifers and water storages were modelled separately. Results are, therefore, more useful to water managers. Moreover, the model is based and calibrated on both satellite and in-situ data, which enhances its reliability and predictive power.

5.2 Model structure and input data

This research showed that GRACE can be an important data source in rainfall-runoff models because it gives direct measurements of the total water balance of a larger region. Especially in Northern Iraq, where water resources and data on water resources are scarce, this is valuable information. However, it is not possible to determine what causes the water variations in these regions without additional data on precipitation, geology and river discharges. This data can partly be obtained from satellites, but the use of in-situ data is still of vital importance. In our situation, there was only little data available, but it could be used for both model structure and

calibration. Additionally, knowledge from local water experts and field observations gave important information on governing hydrologic processes.

In our case, the rainfall and discharge stations covered only a part of the region, which resulted in increased model uncertainties. For example, the uncertainties in the total groundwater values are mainly caused by the alluvial groundwater reservoirs, which have only a small contribution to the total flow at lake Dukan. Inclusion of discharge data series from other tributaries would reduce these uncertainties and give a better insight in the spatial variability of the region at the same time.

References

- Al-Manmi, D. A. M. A.: Sirwan Transboundary River basin management, Tech. rep., Stockholm, 2009.
- Ali, M. H.: Transboundary waterways and streams along the Iraq-Iran border lines....the reality and future, Tech. rep., Baghdad University, Baghdad, 2007.
- Ali, S. S. and Stevanovic, Z.: Time Series Analysis of Saraw Springs - SE of Sulaimaniya, Iraqi Kurdistan Region, in: *Advances in Research in Karst Media*, edited by Andreo, B., Carrasco, F., Durán, J. J., and LaMoreaux, J. W., pp. 89–94, Springer, Leipzig, doi:10.1007/978-3-642-12486-0, 2010.
- Ali, S. S., Stevanovic, Z., and Al-Jabbari, M. H.: Auto and Cross Correlation Analysis of Bestansur spring- Sharazoor Plain Iraqi Kurdistan Region, in: *Proceeding of 3rd scientific conference of the College of Science, University of Baghdad*, pp. 1941–1948, 2009a.
- Ali, S. S., Stevanovic, Z., and Jemcov, I.: The Mechanism and Influence on Karstic Spring Flow - Sachinar Spring Case Example, Sulaimaniya, NE Iraq, *Iraqi Bulletin of Geology and Mining*, 5, 87–100, 2009b.
- Allen, R. G., Pereira, L. S., Raes, D., and Smith, M.: *FAO Irrigation and Drainage Paper No. 56*, Tech. Rep. 56, FAO, Rome, Italy, <http://www.fao.org/docrep/x0490e/x0490e00.htm>, 1998.
- Almazroui, M.: Calibration of TRMM rainfall climatology over Saudi Arabia during 1998–2009, *Atmospheric Research*, 99, 400–414, doi:10.1016/j.atmosres.2010.11.006, 2011.
- Altinbilek, D.: Development and management of the Euphrates-Tigris basin, *International Journal of Water Resources Development*, 20, 15–33, doi:10.1080/07900620310001635584, 2004.
- Altinbilek, H. D.: Water and Land Resources Development in Southeastern Turkey, *International Journal of Water Resources Development*, 13, 311–332, doi:10.1080/07900629749719, 1997.
- Awange, J. L., Fleming, K. M., Kuhn, M., Featherstone, W. E., Heck, B., and Anjasmara, I.: On the suitability of the 4x4 degrees GRACE mascon solutions for remote sensing Australian hydrology, *Remote Sensing of Environment*, 115, 864–875, doi:10.1016/j.rse.2010.11.014, 2011.
- Beaumont, P.: Restructuring of Water Usage in the Tigris-Euphrates Basin : The Impact of Modern Water Management Policies, *Middle Eastern Natural Environments*, 103, 168–186, 1998.
- Brooks, D. B.: Between the Great Rivers : Water in the Heart of the Middle East, *International Journal of Water Resources Development*, 13, 291–310, doi:10.1080/07900629749700, 1997.
- Chenoweth, J., Hadjinicolaou, P., Bruggeman, A., Lelieveld, J., Levin, Z., Lange, M. a., Xoplaki, E., and Hadjikakou, M.: Impact of climate change on the water resources of the eastern Mediterranean and Middle East region: Modeled 21st century changes and implications, *Water Resources Research*, 47, W06 506, doi:10.1029/2010WR010269, 2011.
- Crétaux, J.-F., Jelinski, W., Calmant, S., Kouraev, A., Vuglinski, V., Bergé-Nguyen, M., Gennero, M.-C., Nino, F., Abarca Del Rio, R., Cazenave, A., and Maisongrande, P.: SOLS: A lake database to monitor in the Near Real Time water level and storage variations from remote sensing data, *Advances in Space Research*, 47, 1497–1507, doi:10.1016/j.asr.2011.01.004, <http://www.legos.obs-mip.fr/en/soa/hydrologie/hydroweb/>, 2011.
- Fadhil, A. M.: Drought mapping using Geoinformation technology for some sites in the Iraqi Kurdistan region, *International Journal of Digital Earth*, 4, 239–257, doi:10.1080/17538947.2010.489971, 2011.
- Fenicia, F., Kavetski, D., and Savenije, H. H. G.: Elements of a flexible approach for conceptual hydrological modeling: 1. Motivation and theoretical development, *Water Resources Research*, 47, W11 510, doi:10.1029/2010WR010174, 2011.
- Gibelin, A. and Déqué, M.: Anthropogenic climate change over the Mediterranean region simulated by a global variable resolution model, *Climate Dynamics*, 20, 327–339, doi:10.1007/s00382-002-0277-1, 2003.
- Giorgi, F. and Lionello, P.: Climate change projections for the Mediterranean region, *Global and Planetary Change*, 63, 90–104, doi:10.1016/j.gloplacha.2007.09.005, <http://linkinghub.elsevier.com/retrieve/pii/S0921818107001750>, 2008.
- Hinderer, J., Andersen, O., Lemoine, F., Crossley, D., and Boy, J.-P.: Seasonal changes in the European gravity field from GRACE: A comparison with superconducting gravimeters and hydrology model predictions, *Journal of Geodynamics*, 41, 59–68, doi:10.1016/j.jog.2005.08.037, 2006.
- Huffman, G. J., Bolvin, D. T., Nelkin, E. J., Wolff, D. B., Adler, R. F., Gu, G., Hong, Y., Bowman, K. P., and Stocker, E. F.: The TRMM Multisatellite Precipitation Analysis (TMPA): Quasi-Global, Multiyear, Combined-Sensor Precipitation Estimates at Fine Scales, *Journal of Hydrometeorology*, 8, 38–55, doi:10.1175/JHM560.1, 2007.
- Issa, I. E., Al-Ansari, N., and Knutsson, S.: Sedimentation and new operational curves for Mosul Dam, Iraq, *Hydrological Sciences Journal*, 58, 1456–1466, doi:10.1080/02626667.2013.789138, 2013.
- Kavvas, M., Chen, Z., Anderson, M., Ohara, N., Yoon, J., and Xiang, F.: A study of water balances over the Tigris-Euphrates watershed, *Physics and Chemistry of the Earth, Parts A/B/C*, 36, 197–203, doi:10.1016/j.pce.2010.02.005, 2011.
- Krásný, J., Alsam, S., and Jassim, S. Z.: Hydrogeology, in: *Geology of Iraq*, edited by Jassim, S. Z. and Goff, J. C., pp. 251–287, Publishers Dolin, Prague, first edn., 2006.
- Krogh, P. E., Andersen, O. B., Mikhailovsky, C. I. B., Bauer-Gottwein, P., Rowlands, D. D., Luthcke, S. B., and Chinn, D. S.: Evaluating terrestrial water storage variations from regionally constrained GRACE mascon data and hydrological models over Southern Africa – preliminary results, *International Journal of Remote Sensing*, 31, 3899–3912, doi:10.1080/01431161.2010.483483, <http://www.tandfonline.com/doi/abs/10.1080/01431161.2010.483483>, 2010.

- Lindström, G., Johansson, B., and Persson, M.: Development and test of the distributed HBV-96 hydrological model, *Journal of* 845
..., 201, 272–288, <http://www.sciencedirect.com/science/article/pii/S0022169497000413>, 1997.
- 790 Llubes, M., Florsch, N., Hinderer, J., Longuevergne, L., and Amalvict, M.: Local hydrology, the Global Geodynamics Project and CHAMP/GRACE perspective: some case studies, *Journal of Geodynamics*, 38, 355–374, doi:10.1016/j.jog.2004.07.015, 2004.
- 795 Longuevergne, L., Wilson, C. R., Scanlon, B. R., and Crétaux, J. F.: GRACE water storage estimates for the Middle East and other regions with significant reservoir and lake storage, *Hydrology and Earth System Sciences*, 17, 4817–4830, doi:10.5194/hess-17-4817-2013, 2013.
- 800 Mariotti, A., Zeng, N., Yoon, J.-H., Artale, V., Navarra, A., Alpert, P., and Li, L. Z. X.: Mediterranean water cycle changes: transition to drier 21st century conditions in observations and 860
CMIP3 simulations, *Environmental Research Letters*, 3, 044 001, doi:10.1088/1748-9326/3/4/044001, 2008.
- 805 McLeman, R. A.: Settlement abandonment in the context of global environmental change, *Global Environmental Change*, 21, S108–S120, doi:10.1016/j.gloenvcha.2011.08.004, 2011. 865
- Michel, D., Pandya, A., Hasnain, S. I., Sticklor, R., and Panuganti, S.: Water Challenges and Cooperative Response in the Middle East and North Africa, in: U.S.-Islamic World Forum, pp. 11–15, U.S. World Forum Papers, <http://www.brookings.edu/~media/Research/Files/Papers/2012/11/iwfpapers/Waterweb.pdf>, 2012. 870
- 815 Ngo-Duc, T., Laval, K., Ramillien, G., Polcher, J., and Cazenave, A.: Validation of the land water storage simulated by Organising Carbon and Hydrology in Dynamic Ecosystems (ORCHIDEE) with Gravity Recovery and Climate Experiment (GRACE) data, *Water Resources Research*, 43, W04427, 875
doi:10.1029/2006WR004941, 2007.
- Rodell, M., Houser, P. R., Jambor, U., Gottschalk, J., Mitchell, K., Meng, C.-J., Arsenault, K., Cosgrove, B., Radakovich, J., Bosilovich, M., Entin*, J. K., Walker, J. P., Lohmann, D., and Toll, D.: The Global Land Data Assimilation Sys- 880
tem, *Bulletin of the American Meteorological Society*, 85, 381–394, doi:10.1175/BAMS-85-3-381, <http://ldas.gsfc.nasa.gov/gldas/>, 2004.
- 825 Savenije, H. H. G.: HESS opinions "Topography driven conceptual modelling (FLEX-Topo)", *Hydrology and Earth System Sciences*, 14, 2681–2692, doi:10.5194/hess-14-2681-2010, 2010.
- Schmidt, R., Petrovic, S., Güntner, A., Barthelmes, F., Wünsch, J., and Kusche, J.: Periodic components of water storage changes from GRACE and global hydrology models, *Journal of Geophysical Research*, 113, B08 419, doi:10.1029/2007JB005363, 2008. 890
- Schrama, E. J., Wouters, B., and Rietbroek, R.: A mascon approach to assess ice sheet and glacier mass balances and their uncertainties from GRACE data, *Journal of Geophysical Research: Solid Earth*, 119, 6048–6066, doi:10.1002/2013JB010923, 2014.
- 835 Schrama, E. J. O. and Wouters, B.: Revisiting Greenland ice sheet mass loss observed by GRACE, *Journal of Geophysical Research*, 116, B02 407, doi:10.1029/2009JB006847, 2011.
- 840 Schrama, E. J. O., Wouters, B., and Lavallée, D. A.: Signal and noise in Gravity Recovery and Climate Experiment (GRACE) observed surface mass variations, *Journal of Geophysical Research*, 112, B08 407, doi:10.1029/2006JB004882, 2007. 900
- Shepherd, A., Ivins, E. R., A. G., Barletta, V. R., Bentley, M. J., Bettadpur, S., Briggs, K. H., Bromwich, D. H., Forsberg, R., Galin, N., Horwath, M., Jacobs, S., Joughin, I., King, M. a., Lenaerts, J. T. M., Li, J., Ligtenberg, S. R. M., Luckman, A., Luthcke, S. B., McMillan, M., Meister, R., Milne, G., Mouginot, J., Muir, A., Nicolas, J. P., Paden, J., Payne, A. J., Pritchard, H., Rignot, E., Rott, H., Sørensen, L. S., Scambos, T. a., Scheuchl, B., Schrama, E. J. O., Smith, B., Sundal, A. V., van Angelen, J. H., van de Berg, W. J., van den Broeke, M. R., Vaughan, D. G., Velicogna, I., Wahr, J., Whitehouse, P. L., Wingham, D. J., Yi, D., Young, D., and Zwally, H. J.: A reconciled estimate of ice-sheet mass balance., *Science (New York, N.Y.)*, 338, 1183–9, doi:10.1126/science.1228102, <http://www.ncbi.nlm.nih.gov/pubmed/23197528>, 2012.
- Stevanovic, Z. and Iurkiewicz, A.: Groundwater management in northern Iraq, *Hydrogeology Journal*, 17, 367–378, doi:10.1007/s10040-008-0331-0, 2008.
- Stevanovic, Z. and Markovic, M.: Hydrogeology of Northern Iraq, Food and Agriculture Organisation of the United Nations, Rome, 2004.
- Stevanovic, Z., Iurkiewicz, A., and Maran, A.: New Insights Into Karst and Caves of Northwestern Zagros Northern Iraq, *Acta carologica*, 38, 83–96, doi:10.1007/978-3-642-12486-0, 2009.
- Swenson, S. and Wahr, J.: Post-processing removal of correlated errors in GRACE data, *Geophysical Research Letters*, 33, L08 402, doi:10.1029/2005GL025285, <http://doi.wiley.com/10.1029/2005GL025285>, 2006.
- Syed, T. H., Famiglietti, J. S., Rodell, M., Chen, J., and Wilson, C. R.: Analysis of terrestrial water storage changes from GRACE and GLDAS, *Water Resources Research*, 44, n/a–n/a, doi:10.1029/2006WR005779, <http://doi.wiley.com/10.1029/2006WR005779>, 2008.
- Tourian, M., Elmi, O., Chen, Q., Devaraju, B., Roohi, S., and Sneeuw, N.: A spaceborne multisensor approach to monitor the desiccation of Lake Urmia in Iran, *Remote Sensing of Environment*, 156, 349–360, doi:10.1016/j.rse.2014.10.006, <http://linkinghub.elsevier.com/retrieve/pii/S0034425714004027>, 2015.
- Trigo, R. M., Gouveia, C. M., and Barriopedro, D.: The intense 2007–2009 drought in the Fertile Crescent: Impacts and associated atmospheric circulation, *Agricultural and Forest Meteorology*, 150, 1245–1257, doi:10.1016/j.agrformet.2010.05.006, 2010.
- UN-ESCWA and BGR: Inventory of Shared Water Resources in Western Asia, Tech. rep., United Nations Economic and Social Commission for Western Asia; Bundesanstalt für Geowissenschaften und Rohstoffe, Beirut, <http://waterinventory.org/>, 2013.
- USDA/FAS: Global Reservoirs and Lake Monitor, http://www.pecd.fas.usda.gov/cropexplorer/global_reservoir/, 2013.
- Voss, K. a., Famiglietti, J. S., Lo, M., Linage, C., Rodell, M., and Swenson, S. C.: Groundwater depletion in the Middle East from GRACE with implications for transboundary water management in the Tigris-Euphrates-Western Iran region., *Water resources research*, 49, 904–914, doi:10.1002/wrcr.20078, 2013.
- Werth, S., Güntner, A., Petrovic, S., and Schmidt, R.: Integration of GRACE mass variations into a global hydrological model, *Earth and Planetary Science Letters*, 277, 166–173, doi:10.1016/j.epsl.2008.10.021, 2009.

Table 1. Oversight of water mass decline of lakes within the extended study area in km³ and mm EWH. Note that the mass decline of Lake Urmia and Lake Razzazah is part of a more gradual mass decline, while the water mass decline of other lakes mainly occurred during the 2007-2009 drought due to lake management.

Lake	Mass Decline 2007-2009	
	km ³	mm EWH
Tharthar	12.45 ± 0.04	47.9 ± 0.14
Habbaniyah	0.66 ± 0.04	2.53 ± 0.15
Razzazah	1.18 ± 0.10	4.57 ± 0.39
Hamrin	0.55 ± 0.02	2.11 ± 0.08
Adhaim	0.19 ± 0.10	0.73 ± 0.38
Dukan	0.94 ± 0.06	3.60 ± 0.21
Qadisiyah	5.08 ± 0.05	19.5 ± 0.2
Urmia	4.06 ± 0.14	15.6 ± 0.6
Mosul	0.97 ± 0.06	3.74 ± 0.22

Table 2. Summary of data used in this study

Variable	Dataset	Product	Resolution		Period
			Spatial	Temporal	
Water mass variation	GRACE CSR	-	-	1 mo	2003-2012
Precipitation	TRMM	3B42 V7	0.25° x 0.25°	1 d	1999-2012
Precipitation	Data Metereological department Kurdistan	-	-	1 d	2001-2012
Streamflow	Data Directorate Dukan Dam	-	-	1 d	2001-2012
Temperature	GLDAS	NOAH V2.7	0.25° x 0.25°	3 h	2001-2012
Climatic parameters	GLDAS	NOAH V2.7	0.25° x 0.25°	3 h	2001-2012
Soil moisture	GLDAS	NOAH V2.7	0.25° x 0.25°	3 h	2001-2012
Lake levels	ENVISAT	-	-	35 d	2002-2010
	Jason 1&2	-	-	10 d	2002-2015
Lake area	MODIS	MOD09Q1	250 x 250 m	8 d	2002-2012
Lake area	MODIS	MOD09A1	500 x 500 m	8 d	2002-2012

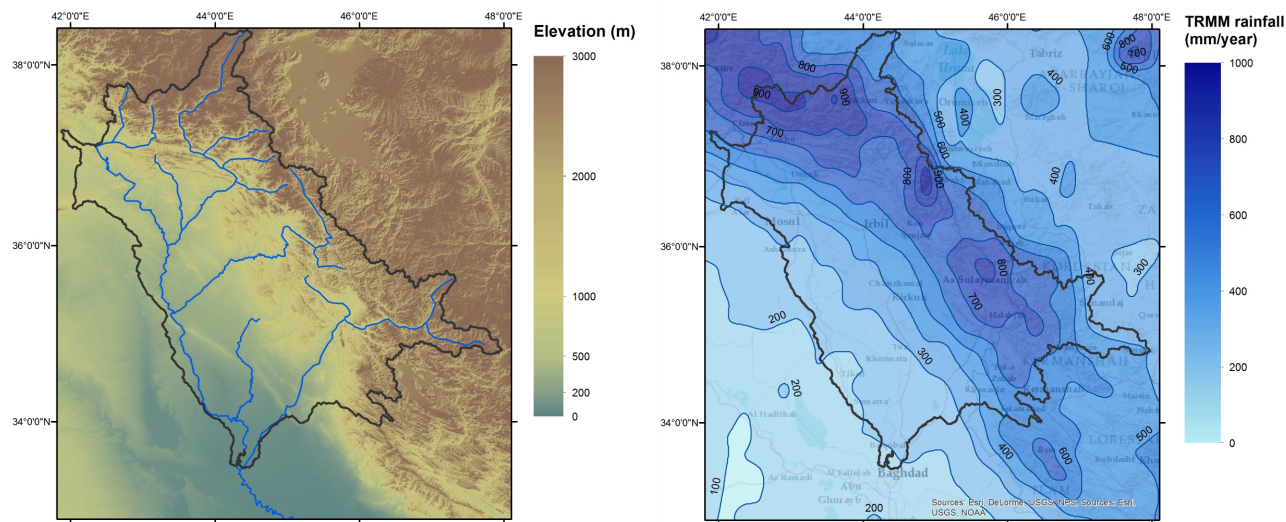


Figure 1. (left) Topographic map of Northern Iraq based on SRTM data and (right) the average yearly rainfall between 2002 and 2012 (mm yr^{-1}) based on TRMM data

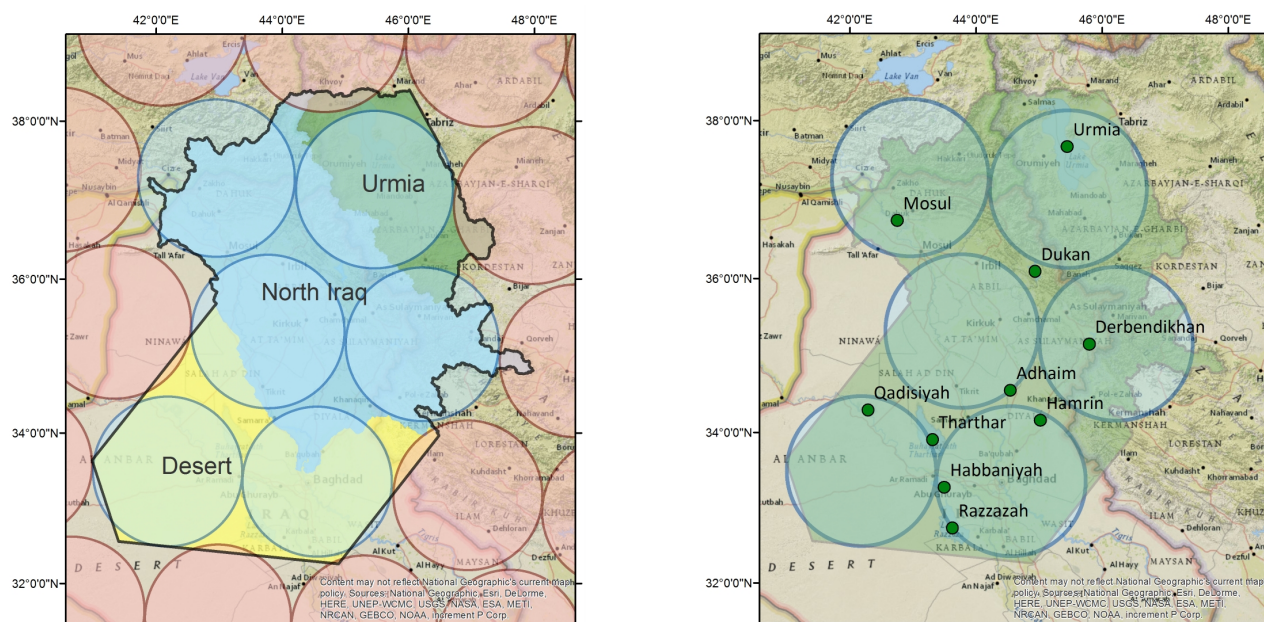


Figure 2. (left) Mascon coverage area for GRACE calculations. In the south-west the included desert area and in the north-east the included Urmia catchment. The blue circles show the coverage of the used mascons and the red circles mascons outside the study area. (right) Map of the total study area including the used mascons and lakes.

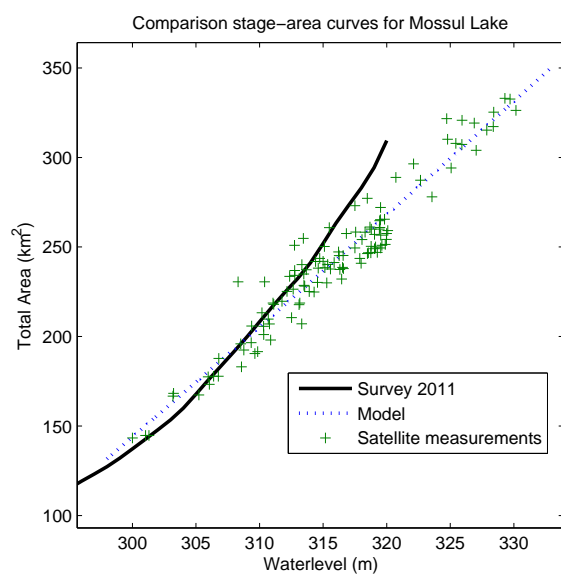


Figure 3. Linear regression stage-area curve for lake Mossul. The curve is compared with a survey in 2011 using sonar by Issa et al. (2013).

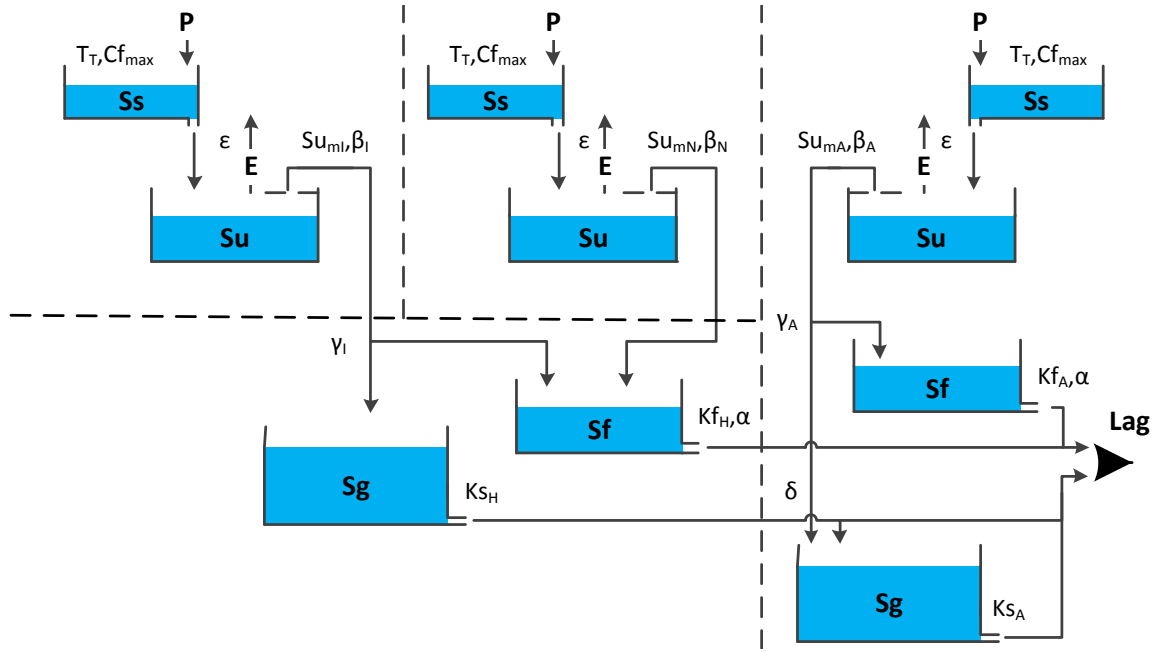


Figure 4. Setup of the rainfall-runoff model based on the three main land classes in Northern Iraq. The upper three reservoirs (Ss) represent the snow accumulation in the basin based in precipitation and temperature. The second layer of three reservoirs (Su) represent the water storage in the unsaturated zone and routes runoff to the fast runoff (Sf) and groundwater (Sg) reservoirs. The third layer of two reservoirs (Sf) represent the water storage related to fast runoff processes, which consist of overland flow and interflow. The two bottom reservoirs represent the groundwater storage, which is the main focus in this study. The water fluxes, indicated with arrows, are calculated based on reservoir levels and model parameters.

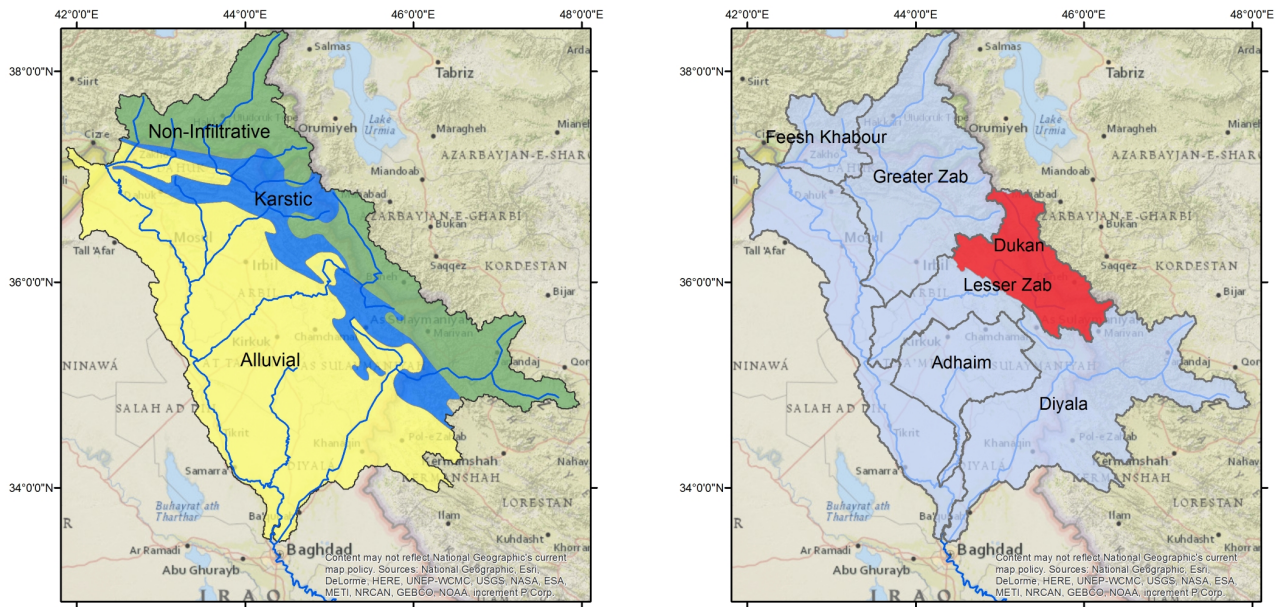


Figure 5. (left) Approximate division of Northern Iraq into three geologic zones, mainly based on (Stevanovic and Iurkiewicz, 2008). (right) Boundaries of main tributaries of the Tigris in Northern Iraq. The Dukan catchment, which is the upper part of the Lesser Zab catchment, is indicated in red. Calibration on streamflow is based on measurements from the Dukan area and calculation of water mass for the whole of Northern Iraq is based on all catchments.

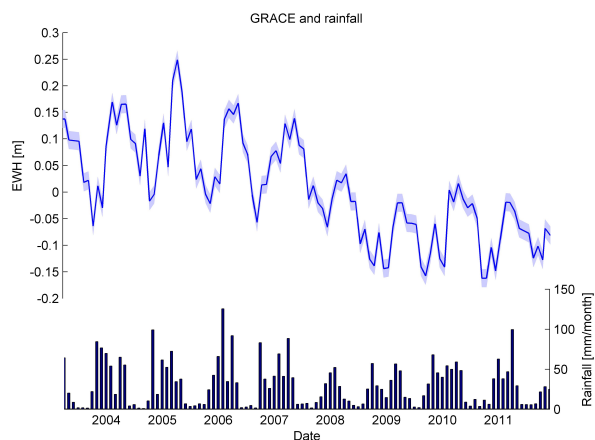


Figure 6. GRACE values and monthly precipitation for extended study area. During the wet winter periods, water accumulates in the region and total water mass increases. Largest water mass depletion occurred during seasons of 2007/2008 and 2008/2009.

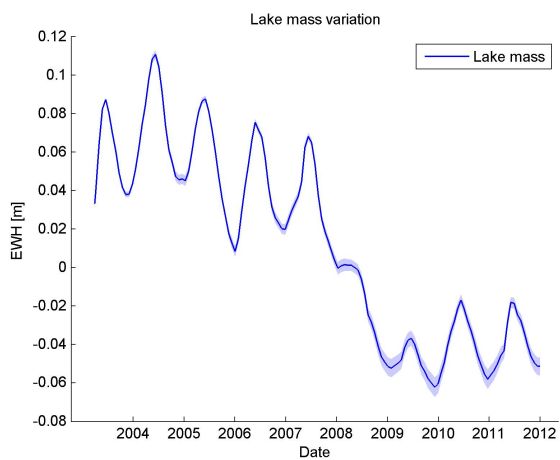


Figure 7. Lake mass variation.

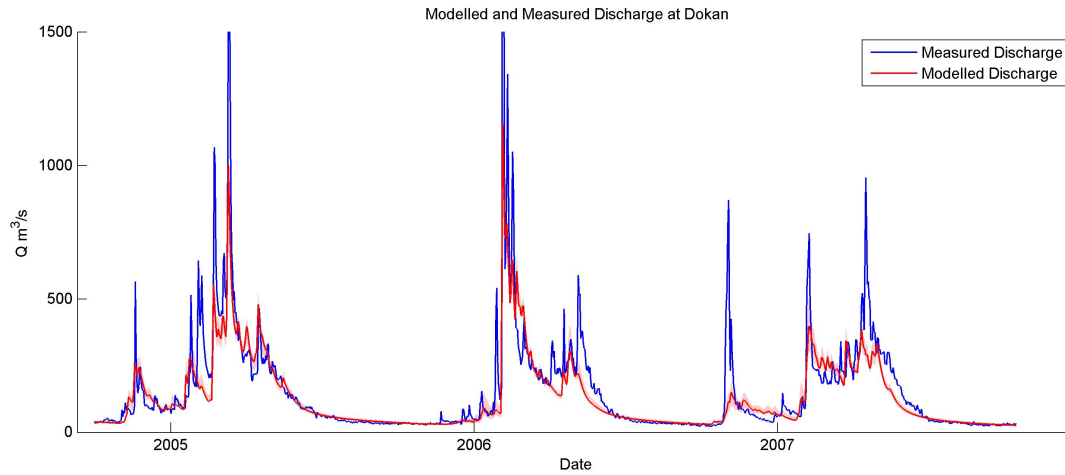


Figure 8. Discharge curves for the Dukan catchment between [Oct 2005 and Oct 2007]. (left) Measured discharge in blue against modelled discharge in red. The red line gives the optimal solution and the bandwidth represents solutions within the pareto ensemble. (right) Identical to left graph but here on a log scale, which gives a better view on the low flows during the dry season.

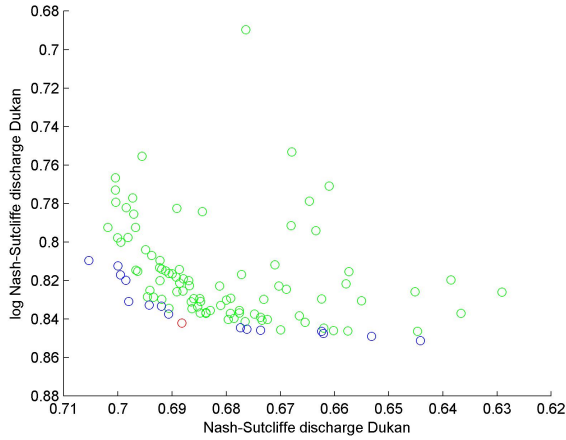


Figure 9. Pareto front for the performance indicators for river flow at the inflow of lake Dukan. The NS model performance is given on the y -axis and the logNS model performance x -axis. The blue dots represents the models which form the pareto front and the red dot the chosen optimal solution. These solution are used to calculate pareto ensembles for model mass and discharge. The green dots represent the models which would be added to the current pareto front if the model is also calibrated using the NS performance of GRACE. The relative little spread of the resulting performances indexes shows that the model produces consistent results for low/high discharges and GRACE values.

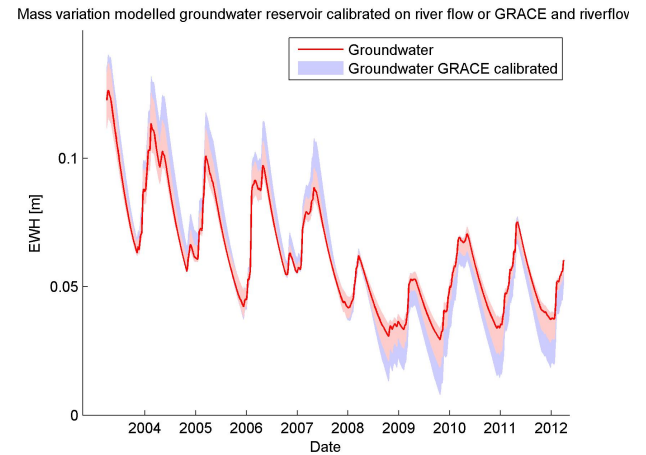


Figure 10. Water mass of groundwater reservoir smoothed over 10 days, showing a permanent decline of groundwater between 2007 and 2009. The red line and bandwidth represent the pareto ensemble based on the NS and logNS of streamflow, while the blue bandwidth shows the extension of the pareto ensemble when the NS for water mass is added as a third objective.

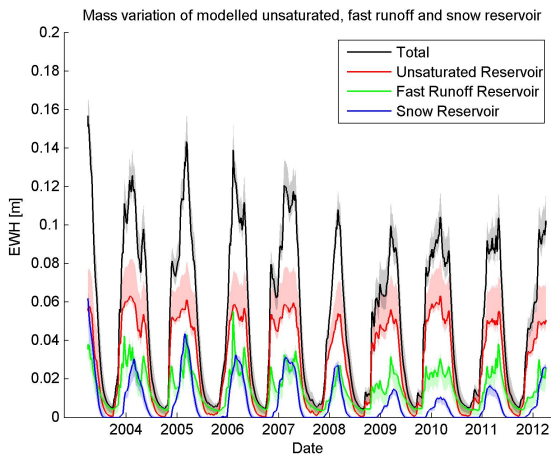


Figure 11. Water mass of the snow, unsaturated and fast runoff reservoir smoothed over 10 days. Lines represent optimal model and the bandwidth the Pareto ensemble based on NS and logNS of streamflow.

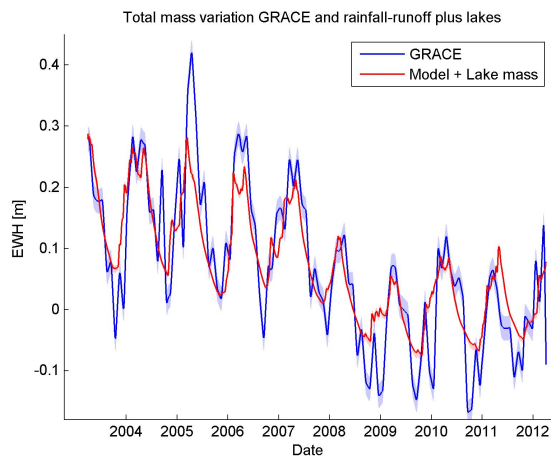


Figure 12. Comparison between resulting mass variation from GRACE and mass variation from lakes and rainfall-runoff model.